

Loup City Public Schools

2013-14 Annual Report to the Community

Board of Education Goals

Goal 1: Academic Excellence

Goal 2: Safe and Orderly Schools

Goal 3: Community Schools

Goal 4: High Quality Workforce

Mission Statement

The Loup City Schools with the support of parents and community are committed to providing all students with positive and challenging educational experience that will empower them to succeed as members of a changing society.

School Information

The Loup City Public Schools welcomes and invites our patrons to visit our schools in person. We have several online resources designed to provide school information and updates:

- District **Website**:
<http://blog.loupcity.k12.ne.us>
- District **Facebook** Page:
Loup City Public Schools
- **Power School**: loupcity.powerschool.com
- **Power Announcement** : Accessed through the Parent Portal of *PowerSchool*

The **district newsletter** is sent to district patrons via email and is available on the district website. The district newsletter will be will be mailed to patrons upon request.



District Leadership

Board of Education

Mike Rademacher-*President*

Jerry Kowalski-*Vice President*

Cindy Ericson- *Secretary*

Loraine Panowicz-*Treasurer*

Cindy Ference- BOE Member

Kelly Griffith- BOE Member

Jim Jaeschke- BOE Member

Joe Jerabek-BOE Member

Jill Young- BOE Member

District Administration

Tom Hinrichs

Superintendent of Schools
Elementary Principal

Nick Hodge

Junior-Senior High School Principal
Activities Director

District Supervisors

Janet Kuszak

Technology Director

Tim Piontkowski

Maintenance / Transportation Director

Bonnie Sekutera

Food Service Director

Janelle Swanson

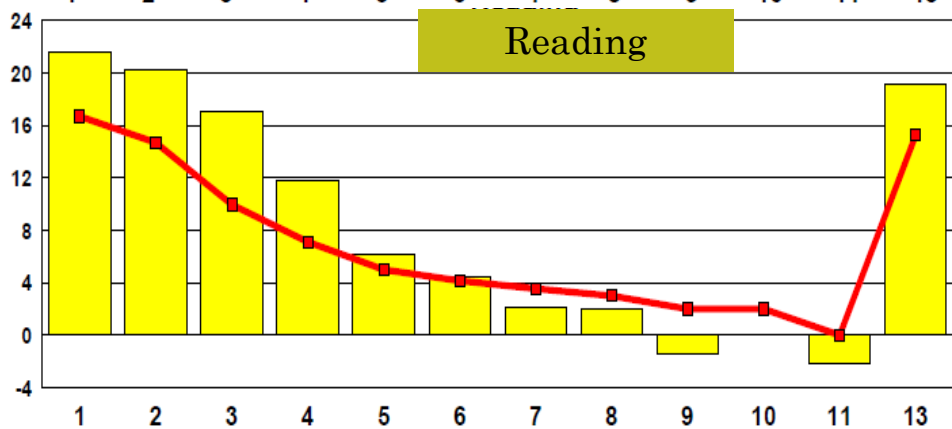
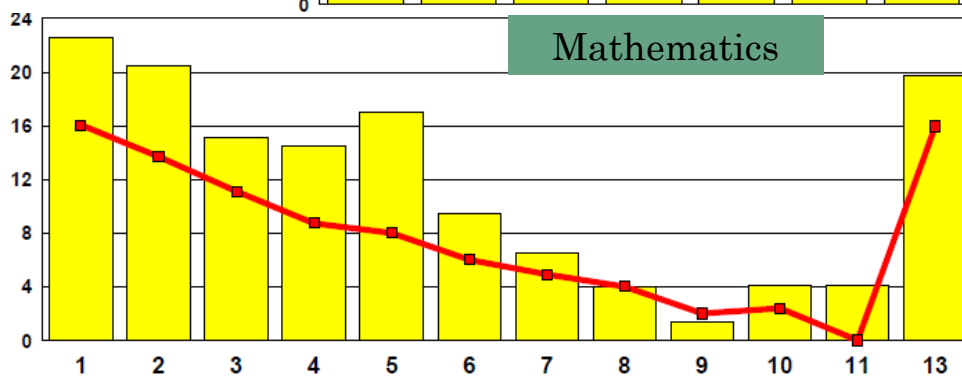
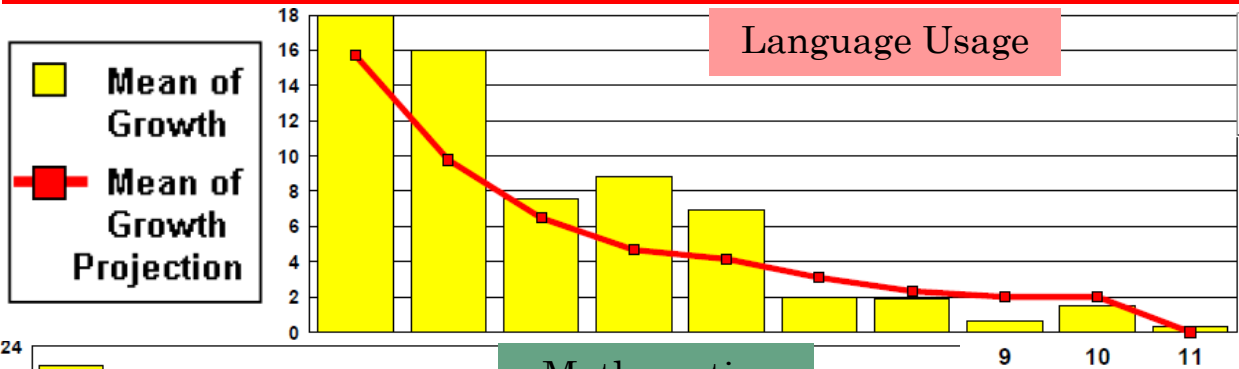
Business Manager

Academic Excellence State Testing

Results of Nebraska State (NeSA) Assessment Tests												
-Reported in percent of LCPS students scoring "proficient" of above												
NeSA Reading					NeSA Math			Writing			Science	
Gr.	2010	2011	2012	2013	2011	2012	2013	2011	2012	2013	2012	2013
3	53%	74%	88%	84.6%	96%	100%	81.5%					
4	66%	75%	73%	76%	81%	86%	84%	81%	86%	56%		
5	60%	48%	70%	90.5%	89%	85%	95.2%				70%	85%
6	67%	88%	72%	66.7%	76%	81%	61.9%					
7	67%	70%	88%	65.6%	85%	83%	81.3%					
8	79%	50%	79%	88.5%	42%	72%	76.9%	67%	44%	81%	67%	85%
11	63%	71%	75%	68%	67%	75%	68.2%	N/A	58%	86%	71%	82%
Dist	65%	69%	78%	77%	79%	84%	79%	N/A	64%	74%	69%	84%

LCPS Student Characteristics	LCPS 2012	LCPS 2013	State Avg.
ACT Composite	20.3	20.3	22.0
Enrollment (PK-12)	351	358	303,242
Testing Participation	100%	100%	-
Attendance Rate	95.3%	95.4%	95.3%
Graduation Rate	84.2%	87%	88.4%
Dropout Rate	N/A	N/A	1.05%
Special Education	13.4%	14.3%	14.7%
Free/ Reduced Meals	53.6%	48.9%	44.2%
Highly Mobile Students	10%	6.8%	4.7%
Adequate Yearly Progress (AYP)	Met	Not Met	-

Successful by any Measure District- MAP- Testing



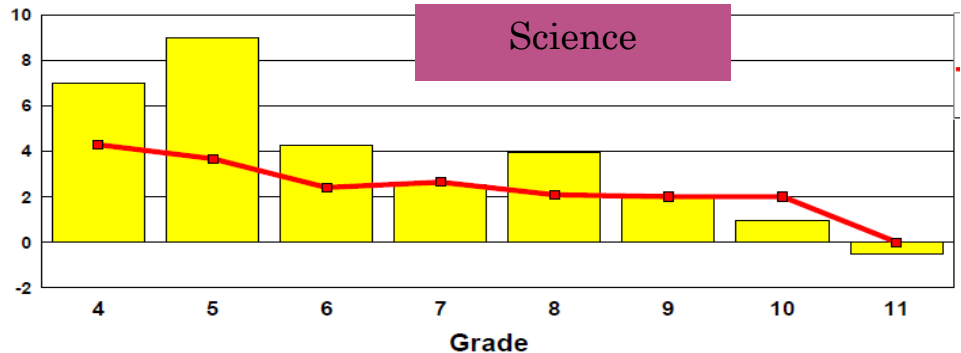
Map growth reports measure the progress of our students by comparing results of tests taken in the fall to those taken in the spring.

The red lines indicate normed (expected) growth and the yellow bars indicate the actual progress made by our students.

In grades where the yellow bar exceeds the red line— students scored above the national average.

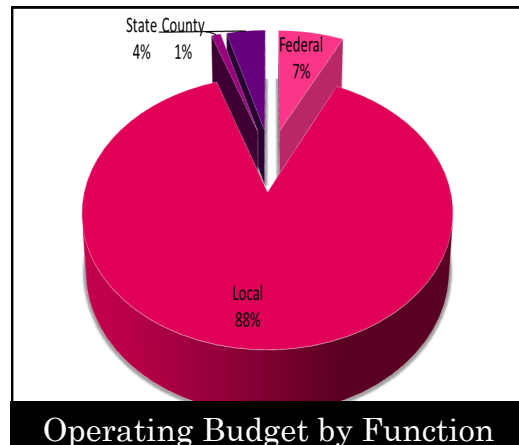
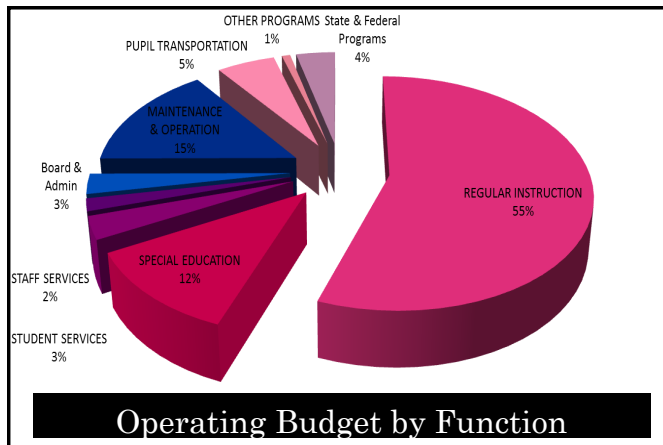
Grade 13= Kindergarten

- Academic Support Programs**
- Special Education
 - Title I Program
 - SAT Program
 - RTI Program
 - Academic Interventions
 - Speech Pathology



Community Supported Schools

LCPS Budget at a Glance			
Area	2010-11	2011-12	2012-13
Gen. Fund Levy	\$0.9612	\$0.9614	\$0.9735
Bond Fund Levy	\$0.1378	\$0.1054	\$0.0902
Total Levy	\$1.099	\$1.0668	\$1.0637
General Fund	\$4,083,026	\$3,865,708	\$4,503,377
Bond Fund	\$336,632	\$268,871	\$190,126
State Aid	\$500,297	\$32,750	\$34,911
Special Bld. Fund	\$283,618	\$289,135	\$294,135
Lunch Fund	\$78,498	\$64,443	\$43,243
Depreciation Fund	\$642,828	\$650,558	\$551,058
Activities fund	\$53,094	\$65,051	\$75,552
Cash Reserve	\$1,645,000	\$200,000	\$75,000
Valuation	\$278,733,484	\$300,633,908	\$317,378,273



High Quality Workforce

Teacher Profile			
Area	2011-12	2012-13	State Avg.
FTE Teaching Staff	27.77	30.34	-
Teachers w. Master's Degrees	11	46.67%	49.27%
Years of Teacher Experience	16.4	16.17	15.03
Average Teacher Salary	\$44,768	\$46,145	\$48,995
NCLB Highly-qualified Teachers	100%	100%	100%

Support Staff

- 5 Bus Drivers
- 4 Custodians
- 3 Cooks
- 7 Inst. Aides
- 3 Office Staff
- 1 School Nurse